

Online Appendix

The Effects of Exposure to Better Neighborhoods on Children: New Evidence from the Moving to Opportunity Experiment

by Raj Chetty, Nathaniel Hendren, and Lawrence F. Katz

APPENDIX TABLE 1a

Summary Statistics and Balance Tests for all Baseline Covariates for Children in MTO-Tax Data Linked Sample

	<i>< Age 13 at Random Assignment</i>			<i>Age 13-18 at Random Assignment</i>		
	Control	Exp. vs.	Sec 8. vs.	Control	Exp. vs.	Sec 8. vs.
	Grp. Mean	Control	Control	Grp. Mean	Control	Control
	(1)	(2)	(3)	(4)	(5)	(6)
<u>Pre-Randomization Children's Characteristics</u>						
Age at Random Assignment	8.2	-0.1 (0.1)	-0.0 (0.1)	15.1	0.1 (0.1)	-0.1 (0.1)
Male (%)	52.7	-1.7 (1.7)	-1.9 (1.9)	51.1	-1.9 (2.6)	0.1 (2.8)
Problems that made it difficult to get to school and/or to play active games (%)	6.2	0.8 (0.9)	0.1 (1.0)	6.8	0.9 (1.5)	0.7 (1.5)
Missing: Problems that made it difficult to get to school or to play active games (%)	5.7	-0.0 (1.0)	0.2 (1.1)	7.7	0.1 (1.5)	-0.3 (1.7)
Problems that required special medicine and/or equipment (%)	8.9	0.1 (1.0)	-0.3 (1.1)	7.0	0.3 (1.4)	2.6 ⁺ (1.5)
Suspended or expelled from school in past 2 years (%)	4.9	0.7 (0.8)	0.4 (0.9)	17.6	1.0 (2.0)	0.4 (2.2)
Missing: Suspended or expelled from school in past 2 years (%)	4.2	-0.8 (0.8)	0.5 (0.9)	5.9	0.1 (1.3)	3.5 [*] (1.6)
Special school, class, or help for behavioral problems in past 2 years (%)	4.7	0.3 (0.8)	1.2 (0.9)	6.6	2.1 (1.4)	2.5 ⁺ (1.5)
Missing: Special school, class, or help for behavioral problems in past 2 years (%)	14.2	-2.1 (1.4)	-1.0 (1.5)	19.9	2.1 (2.4)	1.3 (2.5)
Special class for gifted students or did advanced work (%)	11.1	-0.3 (1.2)	-0.6 (1.2)	16.6	-4.0 [*] (2.1)	0.3 (2.4)
Missing: Special class for gifted students or did advanced work (%)	5.8	-0.7 (0.9)	-0.1 (1.0)	10.7	-0.9 (1.7)	-0.0 (1.8)
Special school, class, or help for learning problem in past 2 years (%)	12.9	-1.4 (1.2)	-2.3 ⁺ (1.2)	15.6	3.5 ⁺ (2.0)	1.5 (2.1)
Missing: Special school, class, or help for learning problem in past 2 years (%)	3.4	0.1 (0.7)	0.9 (0.8)	5.5	0.4 (1.2)	2.6 ⁺ (1.5)
School asked to talk about problems child has with schoolwork or behavior in past 2 yrs. (%)	17.9	0.6 (1.5)	-0.4 (1.6)	30.1	1.0 (2.6)	-0.3 (2.7)
Child in hospital before 1st birthday because he/she was sick or injured (%)	4.4	-0.4 (0.7)	-0.2 (0.8)			
Missing: Child in hospital before 1st birthday because he/she was sick or injured (%)	1.9	-0.4 (0.5)	-0.6 (0.5)			
Child weight < 6 pounds at birth (%)	3.0	0.3 (0.6)	1.0 (0.8)			

Continued on Next Page

Missing: Child weight < 6 pounds at birth (%)	2.7	-0.8 (0.6)	-0.2 (0.7)			
Someone in household usually read a book to child more than once a day (%)	5.6	-0.5 (0.8)	-1.6 ⁺ (0.9)			
Missing: Someone in household usually read a book to child more than once a day (%)	2.3	0.3 (0.6)	-0.4 (0.6)			

Pre-Randomization Household Characteristics

Adult receiving AFDC/TANF (%)	79.5	0.6 (1.9)	1.8 (2.0)	75.0	-0.8 (2.9)	-1.0 (3.0)
Adult owning a car (%)	15.5	5.0** (1.8)	3.3 ⁺ (1.9)	20.1	-1.0 (2.4)	-1.0 (2.6)
Disabled Person in Household (%)	16.1	0.1 (1.8)	-3.3 ⁺ (1.9)	15.3	1.5 (2.3)	0.0 (2.6)
No teen children in core household (%)	71.6	-4.0 ⁺ (2.2)	-3.7 (2.5)	6.1	-0.6 (1.2)	1.0 (1.5)
Core Household size is 2 or smaller (%)	8.0	1.0 (1.0)	-0.2 (1.1)	9.1	-0.5 (1.5)	1.3 (1.8)
Core Household size is 3 or smaller (%)	23.7	-0.3 (1.9)	-2.1 (2.0)	22.3	-0.5 (2.7)	-2.1 (2.8)
Core Household size is 4 or smaller (%)	25.4	2.6 (2.2)	1.6 (2.4)	24.0	1.5 (2.9)	0.3 (3.1)
Victims of Crime in the past 5 years (%)	41.3	2.5 (2.4)	0.9 (2.7)	44.8	1.3 (3.3)	-3.3 (3.5)

Pre-Randomization Neighborhood Characteristics

Living in same nbhd. for over 5 years (%)	58.9	-2.5 (2.4)	0.6 (2.7)	70.4	-3.4 (3.0)	3.0 (3.1)
Chat with neighbor at least once a week (%)	52.8	-2.1 (2.5)	-1.2 (2.8)	50.9	-0.4 (3.4)	-5.7 (3.6)
Very likely to tell neighbor if he/she saw neighbor's child getting into trouble (%)	59.2	-3.7 (2.5)	-1.1 (2.7)	59.6	-2.9 (3.2)	-7.9* (3.5)
No family living in the neighborhood (%)	64.2	0.4 (2.3)	-1.3 (2.7)	67.0	-4.0 (3.1)	-2.1 (3.4)
No friends in the neighborhood (%)	41.3	0.1 (2.4)	-2.5 (2.7)	41.6	1.1 (3.3)	-4.2 (3.5)
Unsafe Streets at night (%)	50.5	0.6 (2.5)	-0.5 (2.8)	53.8	-3.1 (3.3)	-6.5 ⁺ (3.5)
Very Dissatisfied with neighborhood (%)	46.8	1.0 (2.4)	1.7 (2.7)	48.2	-2.2 (3.3)	-6.0 ⁺ (3.5)

Pre-Randomization Housing Characteristics

Sure he/she would find an apartment in a different area of the city (%)	46.6	-0.7 (2.5)	4.5 (2.8)	40.4	7.9* (3.3)	3.8 (3.6)
---	------	---------------	--------------	------	---------------	--------------

Continued on Next Page

More than 3 moves in last 5 years (%)	10.9	-3.4*	-0.8	8.6	-0.7	-2.3
		(1.4)	(1.8)		(1.9)	(1.9)
Primary or Secondary reason for move is to get away from gangs or drugs (%)	78.1	-1.8	-4.4 ⁺	77.7	3.1	-0.9
		(2.1)	(2.4)		(2.6)	(2.9)
Primary or Secondary Reason for moving was to have access to better schools (%)	51.0	1.3	6.9**	47.0	-0.3	6.2 ⁺
		(2.4)	(2.7)		(3.3)	(3.5)
Had already previously applied for a Section 8 voucher or certificate (%)	46.8	-4.9*	-6.7*	46.3	3.9	-7.2*
		(2.4)	(2.6)		(3.3)	(3.5)
<u>Pre-Randomization Hhold. Head Characteristics</u>						
Age as of 12/31/08	44.8	0.4	0.2	50.9	0.5	0.6
		(0.4)	(0.4)		(0.5)	(0.5)
Adult has a GED (%)	20.5	-4.6*	-1.4	19.2	-2.0	-2.7
		(2.0)	(2.3)		(2.6)	(2.7)
High School Completion (%)	34.3	4.2 ⁺	0.4	29.5	5.0	0.7
		(2.4)	(2.6)		(3.1)	(3.3)
Missing: High School Completion (%)	6.6	-1.0	0.3	7.6	-0.8	2.4
		(1.2)	(1.5)		(1.6)	(2.1)
Enrolled in School (%)	16.6	-1.2	2.0	14.5	-2.9	-0.8
		(1.8)	(2.2)		(2.3)	(2.4)
Hispanic (%)	29.4	-0.3	-0.5	31.1	0.6	2.8
		(2.0)	(2.1)		(2.7)	(2.7)
Male head of household (%)	2.8	-0.5	-1.6*	2.6	-0.6	1.9
		(0.8)	(0.7)		(1.0)	(1.4)
Never been married (%)	65.1	-4.3 ⁺	-3.1	53.0	-3.1	-6.3 ⁺
		(2.3)	(2.6)		(3.2)	(3.4)
Teenage Parents (%)	28.6	-0.9	-0.3	29.1	-3.6	-2.5
		(2.2)	(2.5)		(2.9)	(3.2)
African-American (%)	66.9	-0.4	-1.4	63.9	-1.9	-5.9*
		(2.0)	(2.1)		(2.7)	(2.8)
Racial group other than African-American or white (%)	24.7	1.8	1.3	28.9	1.3	2.8
		(1.9)	(2.0)		(2.7)	(2.8)
Employed (%)	23.8	1.0	-2.2	25.3	3.0	-0.4
		(2.1)	(2.2)		(2.9)	(3.0)
Number of Children	1,613	1,969	1,427	686	959	686

Notes: This table replicates Table 1 in the text for all the pre-determined variables used in the regressions that include controls. Columns 1-3 restrict the sample to individuals below age 13 at random assignment; Columns 4-6 include individuals above age 13 at random assignment. Columns 1 and 4 show the control group mean for each variable. Columns 2 and 5 report the difference between the experimental voucher and control group, which we estimate using an OLS regression (weighted to adjust for differences in sampling probabilities across sites and over time) of an outcome on indicators for being assigned to the experimental voucher group, the section 8 voucher group, and randomization site. Columns 3 and 6 report the coefficient for being assigned to the section 8 voucher group from the same regression. The estimates in Columns 2-3 and 5-6 are obtained from separate regressions. Standard errors, reported in parentheses, are clustered by family (* = $p < 0.10$, * = $p < 0.05$, ** = $p < 0.01$). Out of the 196 differences in this table, there are 13 differences with $p < 0.05$ and 2 with $p < 0.01$. The final row lists the numbers of individuals in the control, experimental, and section 8 groups in the linked MTO-Tax Data. See Sanbonmatsu et al. (2011) for details on variable definitions. Note that certain variables (e.g., child weight at birth) were not collected for older youth and are therefore omitted from the age 13-18 group.

APPENDIX TABLE 1b
Summary Statistics for Children's Outcomes in Linked MTO-Tax Data Sample

	Mean (1)	Std. Dev. (2)	Median (3)	Num. of Obs. (4)	Num. of Children (5)
<u>Income</u>					
W-2 Wage Earnings at age 24 (\$)	10,146	14,178	3,900	5,253	5,253
W-2 Wage Earnings at age 25 (\$)	10,958	14,260	4,400	4,589	4,589
W-2 Wage Earnings at age 26 (\$)	11,391	14,995	4,400	3,956	3,956
W-2 Wage Earnings at age 27 (\$)	11,819	15,638	3,800	3,394	3,394
W-2 Wage Earnings at age 28 (\$)	12,505	16,530	4,100	2,851	2,851
Individual Earnings at age 24 (\$)	11,739	14,290	8,400	5,253	5,253
Individual Earnings at age 25 (\$)	12,456	14,257	8,700	4,589	4,589
Individual Earnings at age 26 (\$)	13,040	14,898	9,300	3,956	3,956
Individual Earnings at age 27 (\$)	13,597	15,725	9,300	3,394	3,394
Individual Earnings at age 28 (\$)	14,269	16,665	9,400	2,851	2,851
Household Income at age 24 (\$)	12,920	15,628	9,400	5,253	5,253
Household Income at age 25 (\$)	14,031	16,400	10,000	4,589	4,589
Household Income at age 26 (\$)	15,116	18,038	11,200	3,956	3,956
Household Income at age 27 (\$)	15,992	19,274	11,400	3,394	3,394
Household Income at age 28 (\$)	17,035	20,564	11,900	2,851	2,851
Employed at age \geq 24 (%)	62.3	48.5	100	20,043	5,253
5-year Income Growth at age \geq 24	4,046	14,394	434	20,043	5,253
<u>College Attendance</u>					
In College at age 18 (%)	11.7	32.1	0	6,337	6,337
In College at age 19 (%)	18.0	38.5	0	6,731	6,731
In College at age 20 (%)	19.0	39.3	0	7,059	7,059
In College at age 21 (%)	18.2	38.6	0	7,243	7,243
College Quality at age 18 (\$)	20,841	6,979	18,900	6,337	6,337
College Quality at age 19 (\$)	21,518	7,667	18,900	6,731	6,731
College Quality at age 20 (\$)	21,423	7,484	18,900	7,059	7,059
College Quality at age 21 (\$)	21,319	7,467	18,900	7,243	7,243

Continued on Next Page

Neighborhood Characteristics

Mean Hhold. Income in ZIP at age \geq 24 (\$)	25,661	10,591	24,000	15,798	4,688
Poverty Share in ZIP at age \geq 24 (%)	23.0	12.2	21.5	15,798	4,688
Share Black in ZIP at age \geq 24 (%)	40.0	32.2	34.3	15,800	4,688
Single Mother Share in ZIP at age \geq 24 (%)	40.0	18.0	38.0	15,796	4,688

Fertility (females only) and Marriage

Married at age \geq 24 (%)	7.5	26.3	0	20,043	5,253
Has a Birth before June 2014 (%)	64.4	47.9	100	3,567	3,567
Has a Birth while a Teenager (%)	21.7	41.2	0	3,520	3,520
Father Listed on Birth Certificate (%)	45.2	49.8	0	2,298	2,298
Birth with No Father Present (%)	35.3	47.8	0	3,567	3,567

Tax Payments

Filed a Tax Return at age \geq 24 (%)	63.4	48.2	100	20,043	5,253
Federal Income Tax Paid at age \geq 24 (\$)	611	1,781	0	20,043	5,253

Notes: This table reports the mean, standard deviation, median, the number of observations, and the number of children for all outcome variables used in Tables 3-8 in the text. Median income statistics are rounded to the nearest \$100 to protect confidentiality. The sample consists of all children in the linked MTO-Tax dataset for whom the relevant variables are available between 1999-2012. Variables that pool ages (age \geq 24) are measured pooling data from years 2008-12; all other variables are measured at a single point for each individual. Fertility outcomes are for female children only. See notes to Tables 3-6 and 12 for variable definitions.

APPENDIX TABLE 1c
Examples of MTO Residential Locations by Site

Site:	Baltimore (1)	Boston (2)	Chicago (3)	Los Angeles (4)	New York City (5)
<i>Baseline Housing Projects</i>					
	Flag House (Jonestown), Lexington-Poe, Murphy Homes (W. Baltimore)	Maverick (East Boston), Mission Hill, Old Colony (South Boston)	Ida B. Wells, Robert Taylor Homes, Stateway Gardens	Imperial Courts (Watts), Nickerson Gardens (Watts), Pueblo del Rio (South LA)	King Towers (Harlem), University Ave Cons (Bronx), Wagner Houses (East Harlem)
<i>Destination Neighborhoods for Families who Took Up Experimental Voucher</i>					
	Belair-Edison, Columbia, Lakeland	Hyde Park, Randolph, Roslindale	Calumet Heights, Cottage Grove Heights, Riverdale	Baldwin Hills/Crenshaw, Bellflower, Downey	Pelham Gardens (Bronx), Wakefield (Bronx)
<i>Destination Neighborhoods for Families who Took Up Section 8 Voucher</i>					
	Armistead Gardens, Dundalk, Gwynn Oak (MD)	Jamaica Plain, Mattapan, Roxbury	Grand Crossing, Oakland, Washington Park	Florence-Firestone, Historic South-Central, Westmont	Pelham Parkways (Bronx), Soundview (Bronx)

Notes: This table lists some of the most common locations where families who moved using an MTO voucher lived before and after they moved. The locations listed are not comprehensive and are for illustrative purposes only; MTO families moved to a variety of different neighborhoods beyond the small subset listed here. Panel A lists neighborhoods based on the most common housing projects where MTO families who moved using a Section 8 or experimental voucher lived at the point of random assignment. Panel B lists neighborhoods based on the most common ZIP codes for the first recorded move address for families who were assigned to the experimental voucher group and took up the voucher they were offered. Panel C replicates Panel B for the Section 8 group. The neighborhoods were identified by mapping the names of housing projects (Panel A) and ZIP codes (Panels B and C) to neighborhood names relying on information from web searches; since many of the housing projects have been torn down and ZIP codes do not uniquely identify neighborhoods, these locations may not correspond exactly to current neighborhood definitions and conditions.

APPENDIX TABLE 2

Impacts of MTO on Voucher Takeup and Neighborhood Poverty Rates: Estimates with Controls

Dep. Var.:	Housing Voucher Takeup (%)	Poverty Rate in Tract one year post RA (%)		Mean Poverty Rate in Tract post RA to Age 18 (%)		Mean Poverty Rate in ZIP post RA to Age 18 (%)	
		ITT	TOT	ITT	TOT	ITT	TOT
	(1)	(2)	(3)	(4)	(5)	(6)	(7)
<i>Panel A: Children < Age 13 at Random Assignment</i>							
Exp. vs Control.	47.36** (1.655)	-16.89** (0.852)	-35.84** (1.369)	-10.14** (0.642)	-21.46** (1.094)	-5.71** (0.419)	-12.15** (0.744)
Sec 8. vs. Control	65.39** (1.931)	-14.81** (0.797)	-22.52** (1.026)	-7.88** (0.607)	-11.93** (0.864)	-3.25** (0.416)	-4.84** (0.610)
Num of Obs.	5044	4958	4958	5035	5035	5035	5035
Control Group Mean	0	50.23	50.23	41.17	41.17	31.81	31.81
<i>Panel B: Children Age 13-18 at Random Assignment</i>							
Exp. vs Control.	39.65** (2.134)	-13.86** (1.127)	-34.64** (2.222)	-9.81** (0.933)	-24.39** (1.912)	-5.44** (0.536)	-13.64** (1.107)
Sec 8. vs. Control	56.01** (2.541)	-12.33** (1.081)	-21.68** (1.701)	-8.33** (0.923)	-14.53** (1.508)	-3.72** (0.533)	-6.23** (0.913)
Num of Obs.	2358	2302	2302	2293	2293	2292	2292
Control Group Mean	0	49.14	49.14	47.90	47.90	35.17	35.17

Notes: This table replicates Table 2 in the text, including controls for the baseline covariates listed in Appendix Table 1a in every regression specification. Standard errors, reported in parentheses, are clustered by family (* = $p < 0.10$, * = $p < 0.05$, ** = $p < 0.01$). See notes to Table 2 for details on variable definitions and specifications.

APPENDIX TABLE 3a

Impacts of MTO on Children's Income in Adulthood: Estimates with Controls

	Dep. Var.: W-2 Earnings (\$)	Indiv. Earnings 2008-12 (\$)			Indiv. Earnings (\$)		Employed (%)	Hhold. Inc. (\$)	Inc. Growth (\$)
	2008-12 ITT	ITT	ITT w/Cntrls.	TOT	Age 26 ITT	2012 ITT	2008-12 ITT	2008-12 ITT	2008-12 ITT
	(1)	(2)	(3)	(4)	(5)	(6)	(7)	(8)	(9)
<i>Panel A: Children < Age 13 at Random Assignment</i>									
Exp. vs. Control	1016.8 (640.5)	1298.9* (636.9)	1298.9* (636.9)	2798.5* (1369.8)	1378.6 (887.0)	1335.4* (643.0)	0.920 (1.958)	1764.2* (716.3)	1105.9* (510.7)
Sec. 8 vs. Control	492.4 (677.3)	908.6 (655.8)	908.6 (655.8)	1426.3 (1023.5)	219.4 (895.7)	1075.9 (679.0)	0.736 (2.132)	1140.1 (702.2)	638.2 (517.1)
Num of Obs.	8420	8420	8420	8420	1625	2922	8420	8420	8420
Control Group Mean	9548.6	11270.3	11270.3	11270.3	11398.3	11302.9	61.8	12702.4	4002.2
<i>Panel B: Children Age 13-18 at Random Assignment</i>									
Exp. vs. Control	-655.3 (825.0)	-879.5 (817.3)	-879.5 (817.3)	-2224.6 (2069.7)	-449.4 (745.6)	-911.5 (1125.8)	-1.655 (1.988)	-1396.0 (1047.3)	-641.5 (576.1)
Sec. 8 vs. Control	-1134.7 (870.5)	-1136.9 (866.6)	-1136.9 (866.6)	-2022.8 (1546.9)	-15.53 (797.7)	-878.9 (1166.1)	-1.050 (2.179)	-1068.2 (1101.6)	-968.6 (615.2)
Num of Obs.	11623	11623	11623	11623	2331	2331	11623	11623	11623
Control Group Mean	13897.1	15881.5	15881.5	15881.5	13968.9	16602.0	63.6	19169.1	4128.1

Notes: This table replicates Table 3 in the text, including controls for the baseline covariates listed in Appendix Table 1a in every regression specification. Note that Columns 2 and 3 are identical to make the structure of this table match that of Table 3 in the text. Standard errors, reported in parentheses, are clustered by family (* = p<0.10, * = p<0.05, ** = p<0.01). See notes to Table 3 for details on variable definitions and specifications.

APPENDIX TABLE 3b

Impacts of MTO on Children's Income in Adulthood: Treatment-on-Treated Estimates

Dep. Var.: W-2 Earnings (\$)	Indiv. Earnings 2008-12 (\$)			Indiv. Earnings (\$)		Employed (%)	Hhold. Inc. (\$)	Inc. Growth (\$)	
	2008-12 TOT	TOT	TOT w/Cntrls.	TOT	Age 26	2012	2008-12 TOT	2008-12 TOT	2008-12 TOT
	(1)	(2)	(3)	(4)	(5)	(6)	(7)	(8)	(9)
<i>Panel A: Children < Age 13 at Random Assignment</i>									
Exp. vs. Control	2866.5*	3476.8*	2798.5*	3476.8*	3794.9 ⁺	3036.2*	3.907	4776.0**	2802.5*
	(1436.3)	(1418.2)	(1369.8)	(1418.2)	(1986.5)	(1398.8)	(4.454)	(1662.8)	(1106.1)
Sec. 8 vs. Control	1065.8	1723.2	1426.3	1723.2	858.1	1801.7 ⁺	2.100	2255.6*	1242.2
	(1086.8)	(1051.5)	(1023.5)	(1051.5)	(1389.3)	(1073.3)	(3.570)	(1144.5)	(807.3)
Num of Obs.	8420	8420	8420	8420	1625	2922	8420	8420	8420
CCM Exp.	8901.1	10165.2	10843.5	10165.2	9431.3	10409.0	60.6	10803.5	3032.9
CCM Sec. 8	9025.2	10546.1	10843.0	10546.1	11459.8	10444.5	61.3	11798.1	3181.7
<i>Panel B: Children Age 13-18 at Random Assignment</i>									
Exp. vs. Control	-1910.0	-2426.7	-2224.6	-2426.7	-1356.2	-2436.1	-5.458	-3817.0	-1740.7
	(2192.9)	(2154.4)	(2069.7)	(2154.4)	(1999.8)	(2825.4)	(5.383)	(2783.9)	(1442.6)
Sec. 8 vs. Control	-1899.1	-2051.1	-2022.8	-2051.1	-27.64	-1571.9	-2.407	-1696.5	-1602.9
	(1693.1)	(1673.7)	(1546.9)	(1673.7)	(1527.4)	(2193.5)	(4.123)	(2150.9)	(1130.1)
Num of Obs.	11623	11623	11623	11623	2331	2331	11623	11623	11623
CCM Exp.	15984.9	18334.6	18132.4	18334.6	15236.9	19426.5	67.0	22548.8	5665.7
CCM Sec. 8	15432.4	17374.2	17345.9	17374.2	14635.5	18062.8	66.0	20914.8	5431.8

Notes: This table replicates Table 3 in the text, but reports treatment-on-the-treated (TOT) estimates instead of ITT estimates in all columns. The TOT coefficients are estimated using a 2SLS specification (weighted to adjust for differences in sampling probabilities across sites and over time and including randomization site fixed effects), instrumenting for voucher takeup with the experimental and section 8 assignment indicators. Standard errors, reported in parentheses, are clustered by family (⁺ = p<0.10, * = p<0.05, ** = p<0.01). CCM Exp. denotes the control complier mean corresponding to the experimental voucher group. CCM Exp. is constructed as the mean value of the dependent variable in the estimation sample among compliers (i.e., those who took up the voucher) in the experimental group minus the TOT estimate of the experimental effect. CCM Sec. 8. denotes the control complier mean corresponding to the Section 8 group, constructed analogously. Note that Columns 2 and 4 are identical to make the structure of this table match that of Table 3 in the text. See notes to Table 3 for further details on variable definitions and specifications.

APPENDIX TABLE 3c

Impacts of MTO on Children's Income in Adulthood: Decomposition of Income Responses

Dep. Var.:	W-2 Earnings (\$) (1)	Non-W-2 Earnings (\$) (2)	Indiv. Earnings (\$) [Col. 1+2] (3)	Soc. Sec. and DI Inc. (\$) (4)	Unemp. Benefits (\$) (5)	Indiv. Income (\$) [Col. 3+4+5] (6)	Spouse Income (\$) (7)	Hhold. Income (\$) [Col. 6+7] (8)	Top-Coded Ind. Earnings (\$) (9)	Top-Coded Hhold Inc. (\$) (10)
<i>Panel A: Children < Age 13 at Random Assignment</i>										
Exp. vs. Control	1339.8* (671.3)	284.2 (181.7)	1624.0* (662.4)	-97.70+ (53.61)	166.6+ (99.31)	1692.9* (669.4)	520.9 (353.5)	2231.1** (771.3)	1554.6* (650.8)	2104.0** (743.4)
Sec. 8 vs. Control	687.4 (698.7)	421.9* (214.0)	1109.3 (676.1)	-28.91 (72.12)	193.4 (118.6)	1273.8+ (690.5)	207.9 (282.9)	1452.4* (735.5)	1090.2 (675.2)	1455.8* (729.2)
Num of Obs.	8420	8420	8420	8420	8420	8420	8420	8420	8420	8420
Control Group Mean	9548.6	1721.7	11270.3	197.6	764.4	12232.3	802.1	12702.4	11270.3	12664.5
<i>Panel B: Children Age 13-18 at Random Assignment</i>										
Exp. vs. Control	-761.2 (870.6)	-205.7 (189.6)	-966.9 (854.3)	57.46 (48.57)	0.344 (100.4)	-909.1 (857.7)	-498.5 (608.6)	-1519.8 (1102.2)	-847.9 (828.5)	-1178.5 (988.8)
Sec. 8 vs. Control	-1048.9 (932.5)	-83.92 (204.4)	-1132.8 (922.3)	131.8* (65.91)	65.40 (120.9)	-935.6 (925.9)	29.17 (644.8)	-936.7 (1185.9)	-1055.7 (893.0)	-625.4 (1076.7)
Num of Obs.	11623	11623	11623	11623	11623	11623	11623	11623	11623	11623
Control Group Mean	13897.1	1984.4	15881.5	114.2	922.5	16918.2	2702.4	19169.1	15755.3	18555.3

Notes: Each column replicates the intent-to-treat OLS regression specification in Column 1 of Table 3 with a different dependent variable. All columns include one observation per individual per year from 2008-12 in which the individual is 24 or older. Standard errors, reported in parentheses, are clustered by family (* = $p < 0.10$, * = $p < 0.05$, ** = $p < 0.01$). Panel A restricts the sample to children below age 13 at random assignment; Panel B includes children between age 13 and 18 at random assignment. The estimates in Panels A and B are obtained from separate regressions. The dependent variable in Column 1 is individual W-2 wage earnings, summing over all available W-2 forms. Column 2 uses non-W-2 earnings as the dependent variable. Non-W-2 earnings is defined as adjusted gross income minus own and spouse's W-2 earnings, social security and disability benefits, and UI payments, divided by the number of filers on the tax return. Non-W-2 earnings is recoded to 0 if negative and is defined as 0 for non-filers. Column 3 uses individual earnings, defined as the sum of W-2 earnings and non-W-2 earnings. Column 4 uses total social security and disability insurance (SSDI) benefits as the dependent variable, while Column 5 uses unemployment benefits. The dependent variable in Column 6 is individual income, which is individual earnings plus SSDI and unemployment benefits. Column 7 uses the spouse's individual income as the dependent variable. Spouse's individual income is defined analogously to own individual income for married individuals and is 0 for single individuals. Column 8 uses household income, defined as adjusted gross income plus tax-exempt social security benefits and interest income for those who file tax returns, the sum of W-2 wage earnings, SSDI benefits, and UI benefits for non-filers, and 0 for non-filers with no W-2 earnings, SSDI, or UI benefits. Household income is recoded to 0 if negative, which is why the estimates in Columns 6 and 7 do not sum exactly to those in Column 8. Column 9 and 10 replicate the specifications in Columns 3 and 8, top-coding the income measures at \$100,000.

APPENDIX TABLE 4a

Impacts of MTO on Children's College Attendance Outcomes: Estimates with Controls

Dep. Var.:	College Attendance (%) ITT					College Quality (\$) ITT				
	Age 18-20 (1)	Age 18 (2)	Age 19 (3)	Age 20 (4)	Age 21 (5)	Age 18-20 (6)	Age 18 (7)	Age 19 (8)	Age 20 (9)	Age 21 (10)
<i>Panel A: Children < Age 13 at Random Assignment</i>										
Exp. vs. Control	1.705 (1.091)	1.558 (1.183)	1.618 (1.408)	1.937 (1.414)	-0.485 (1.408)	536.2* (224.0)	525.3* (234.4)	618.1* (266.5)	465.3* (257.5)	229.3 (258.6)
Sec. 8 vs. Control	0.522 (1.192)	0.806 (1.280)	-0.250 (1.551)	1.009 (1.526)	-1.027 (1.502)	538.2* (240.7)	525.2* (261.2)	472.5 (289.6)	616.8* (280.5)	464.8* (278.9)
Num of Obs.	15027	5009	5009	5009	5009	15027	5009	5009	5009	5009
Control Group Mean	16.5	11.3	18.6	19.6	20.1	20914.7	20479.6	21148.7	21115.7	21152.3
<i>Panel B: Children Age 13-18 at Random Assignment</i>										
Exp. vs. Control	-3.339* (1.650)	-4.745* (2.185)	-3.288 (2.111)	-2.395 (2.015)	-3.019 (1.865)	-629.7* (376.8)	-909.9* (480.3)	-586.2 (454.6)	-475.9 (402.8)	-593.2 (380.4)
Sec. 8 vs. Control	-2.413 (1.669)	-2.317 (2.248)	-3.840* (2.135)	-1.226 (2.102)	-4.735* (1.955)	-555.0 (399.9)	-450.7 (521.1)	-770.7 (476.2)	-461.9 (434.5)	-666.2 (412.8)
Num of Obs.	5100	1328	1722	2050	2234	5100	1328	1722	2050	2234
Control Group Mean	15.6	12.4	16.8	16.6	17.2	21638.0	21337.3	21880.1	21629.8	21597.8

Notes: This table replicates Table 4 in the text, including controls for the baseline covariates listed in Appendix Table 1a in every regression specification. Standard errors, reported in parentheses, are clustered by family (+ = $p < 0.10$, * = $p < 0.05$, ** = $p < 0.01$). See notes to Table 4 for details on variable definitions and specifications.

APPENDIX TABLE 4b

Impacts of MTO on Children's College Attendance Outcomes: Treatment-on-Treated Estimates

Dep. Var.:	College Attendance (%) TOT					College Quality (\$) TOT				
	Age 18-20	Age 18	Age 19	Age 20	Age 21	Age 18-20	Age 18	Age 19	Age 20	Age 21
	(1)	(2)	(3)	(4)	(5)	(6)	(7)	(8)	(9)	(10)
<i>Panel A: Children < Age 13 at Random Assignment</i>										
Exp. vs. Control	5.233*	4.619 ⁺	5.376 ⁺	5.705 ⁺	0.849	1435.5**	1400.8**	1672.5**	1233.3*	708.2
	(2.382)	(2.501)	(3.024)	(3.051)	(3.074)	(482.6)	(502.0)	(571.9)	(547.3)	(562.5)
Sec. 8 vs. Control	1.499	1.849	0.754	1.895	-0.566	960.5*	898.6*	917.3*	1065.5*	834.7 ⁺
	(1.921)	(1.979)	(2.451)	(2.429)	(2.419)	(391.3)	(409.4)	(464.5)	(449.4)	(446.8)
Num of Obs.	15027	5009	5009	5009	5009	15027	5009	5009	5009	5009
CCM Exp.	15.4	10.9	17.2	18.0	20.5	20417.6	20043.4	20507.2	20702.2	20867.1
CCM Sec. 8	15.1	10.4	17.2	17.8	20.7	20345.1	19939.7	20521.3	20574.4	20727.2
<i>Panel B: Children Age 13-18 at Random Assignment</i>										
Exp. vs. Control	-10.32*	-14.17**	-10.67*	-7.347	-8.739 ⁺	-2138.9*	-2889.6*	-2130.2 ⁺	-1649.9	-1704.2 ⁺
	(4.221)	(5.376)	(5.203)	(5.136)	(4.890)	(943.7)	(1182.5)	(1116.2)	(1021.5)	(997.9)
Sec. 8 vs. Control	-5.464 ⁺	-6.094	-7.180 ⁺	-3.374	-8.077*	-1082.5	-1060.0	-1334.7	-882.1	-1093.2
	(3.259)	(4.199)	(4.126)	(3.919)	(3.702)	(790.5)	(1000.1)	(938.0)	(836.0)	(812.0)
Num of Obs.	5100	1328	1722	2050	2234	5100	1328	1722	2050	2234
CCM Exp.	22.0	21.4	22.3	21.8	20.9	22887.1	23169.3	22887.3	22685.1	22422.3
CCM Sec. 8	20.1	15.2	21.4	22.0	21.6	22358.3	21885.5	22637.9	22436.4	22255.4

Notes: This table replicates Table 4 in the text, but reports treatment-on-the-treated (TOT) estimates instead of ITT estimates in all columns. The TOT coefficients are estimated using a 2SLS specification (weighted to adjust for differences in sampling probabilities across sites and over time and including randomization site fixed effects), instrumenting for voucher takeup with the experimental and section 8 assignment indicators. Standard errors, reported in parentheses, are clustered by family (+ = $p < 0.10$, * = $p < 0.05$, ** = $p < 0.01$). CCM Exp. denotes the control complier mean corresponding to the experimental voucher group. CCM Exp. is constructed as the mean value of the dependent variable in the estimation sample among compliers (i.e., those who took up the voucher) in the experimental group minus the TOT estimate of the experimental effect. CCM Sec. 8. denotes the control complier mean corresponding to the Section 8 group, constructed analogously. See notes to Table 4 for further details on variable definitions and specifications.

APPENDIX TABLE 5a
Impacts of MTO on Marriage and Fertility: Estimates with Controls

Sample:	All	Males	Females				
			Dep. Var.: Married (%) (1)	Married (%) (2)	Married (%) (3)	Has Birth (%) (4)	Teen Birth (%) (5)
<i>Panel A: Children < Age 13 at Random Assignment</i>							
Exp. vs. Control	1.658 ⁺ (0.887)	0.148 (1.029)	3.163 [*] (1.513)	-0.671 (2.434)	-0.299 (2.097)	4.776 (3.321)	-3.510 (2.330)
Sec. 8 vs. Control	2.419 [*] (1.054)	0.325 (1.109)	4.601 ^{**} (1.756)	0.0764 (2.561)	2.967 (2.372)	1.733 (3.564)	-1.463 (2.525)
Num of Obs.	8420	4384	4036	2409	2379	1410	2409
Control Group Mean	3.4	2.7	4.1	59.1	19.9	44.1	33.0
<i>Panel B: Children Age 13-18 at Random Assignment</i>							
Exp. vs. Control	0.129 (1.308)	-1.176 (1.737)	1.382 (1.994)	-2.676 (3.070)	-0.947 (3.203)	-9.971 [*] (4.241)	5.534 (3.654)
Sec. 8 vs. Control	0.0124 (1.411)	-0.638 (1.858)	0.398 (2.094)	-1.966 (3.247)	-0.495 (3.664)	-3.229 (4.479)	0.632 (3.827)
Num of Obs.	11623	5852	5771	1158	1141	888	1158
Control Group Mean	9.3	9.3	9.2	77.8	24.7	46.7	41.4

Notes: This table replicates Table 5 in the text, including controls for the baseline covariates listed in Appendix Table 1a in every regression specification. Standard errors, reported in parentheses, are clustered by family (+ = $p < 0.10$, * = $p < 0.05$, ** = $p < 0.01$). See notes to Table 5 for details on variable definitions and specifications.

APPENDIX TABLE 5b
Impacts of MTO on Marriage and Fertility: Treatment-on-Treated Estimates

Sample:	All	Males	Females				
	Dep. Var.: Married (%) (1)	Married (%) (2)	Married (%) (3)	Has Birth (%) (4)	Teen Birth (%) (5)	Father on Birth Cert. (%) (6)	Birth with No Father Present (%) (7)
<i>Panel A: Children < Age 13 at Random Assignment</i>							
Exp. vs. Control	4.153* (1.923)	1.589 (2.226)	7.137* (3.186)	-4.661 (5.198)	-1.350 (4.391)	14.82* (7.242)	-9.958* (4.881)
Sec. 8 vs. Control	4.425** (1.655)	1.641 (1.767)	7.134* (2.788)	-0.425 (4.101)	3.710 (3.645)	4.035 (5.382)	-1.996 (3.923)
Num of Obs.	8420	4384	4036	2409	2379	1410	2409
CCM Exp.	1.0	2.2	-0.5	61.4	18.9	36.3	37.7
CCM Sec. 8	1.5	2.2	0.9	60.0	20.8	40.8	34.9
<i>Panel B: Children Age 13-18 at Random Assignment</i>							
Exp. vs. Control	-0.162 (3.434)	-3.727 (4.781)	2.845 (4.821)	-6.299 (7.560)	-5.818 (7.681)	-20.06* (10.08)	10.35 (8.782)
Sec. 8 vs. Control	1.183 (2.648)	-1.071 (3.656)	3.158 (3.790)	-0.976 (5.730)	-1.141 (6.269)	-0.512 (7.672)	-1.170 (6.594)
Num of Obs.	11623	5852	5771	1158	1141	888	1158
CCM Exp.	10.5	12.4	8.9	83.3	30.6	59.5	36.2
CCM Sec. 8	9.7	9.3	10.3	77.9	26.3	50.9	39.4

Notes: This table replicates Table 5 in the text, but reports treatment-on-the-treated (TOT) estimates instead of ITT estimates in all columns. The TOT coefficients are estimated using a 2SLS specification (weighted to adjust for differences in sampling probabilities across sites and over time and including randomization site fixed effects), instrumenting for voucher takeup with the experimental and section 8 assignment indicators. Standard errors, reported in parentheses, are clustered by family (* = $p < 0.10$, * = $p < 0.05$, ** = $p < 0.01$). CCM Exp. denotes the control complier mean corresponding to the experimental voucher group. CCM Exp. is constructed as the mean value of the dependent variable in the estimation sample among compliers (i.e., those who took up the voucher) in the experimental group minus the TOT estimate of the experimental effect. CCM Sec. 8. denotes the control complier mean corresponding to the Section 8 group, constructed analogously. See notes to Table 5 for further details on variable definitions and specifications.

APPENDIX TABLE 6a

Impacts of MTO on Children's Neighborhood Characteristics: Estimates with Controls

Dep. Var.:	Poverty Share in ZIP 2008-12 (%)	Mean Income in ZIP 2008-12 (\$)	Black Share in ZIP 2008-12 (%)	Single Mother Share in ZIP 2008-12 (%)
	(1)	(2)	(3)	(4)
<i>Panel A: Children < Age 13 at Random Assignment</i>				
Exp. vs. Control	-1.651** (0.589)	1252.3** (472.6)	-2.735* (1.390)	-1.849* (0.838)
Sec. 8 vs. Control	-1.547* (0.677)	1317.0* (542.0)	-5.750** (1.625)	-3.177** (0.950)
Num of Obs.	6649	6649	6651	6648
Control Group Mean	23.8	25014.3	43.0	42.0
<i>Panel B: Children Age 13-18 at Random Assignment</i>				
Exp. vs. Control	-0.385 (0.625)	487.0 (468.8)	0.798 (1.510)	-0.110 (0.909)
Sec. 8 vs. Control	-0.357 (0.676)	106.5 (520.3)	-1.009 (1.608)	-1.068 (0.942)
Num of Obs.	9149	9149	9149	9148
Control Group Mean	23.6	25170.5	39.6	40.1

Notes: This table replicates Table 6 in the text, including controls for the baseline covariates listed in Appendix Table 1a in every regression specification. Standard errors, reported in parentheses, are clustered by family (+ = $p < 0.10$, * = $p < 0.05$, ** = $p < 0.01$). See notes to Table 6 for details on variable definitions and specifications.

APPENDIX TABLE 6b

Impacts of MTO on Children's Neighborhood Characteristics: Treatment-on-Treated Estimates

Dep. Var.:	Poverty Share in ZIP 2008-12 (%)	Mean Income in ZIP 2008-12 (\$)	Black Share in ZIP 2008-12 (%)	Single Mother Share in ZIP 2008-12 (%)
	(1)	(2)	(3)	(4)
<i>Panel A: Children < Age 13 at Random Assignment</i>				
Exp. vs. Control	-3.378** (1.255)	2857.2** (1034.9)	-6.067* (2.989)	-3.855* (1.805)
Sec. 8 vs. Control	-2.148* (1.076)	2038.0* (864.5)	-8.728** (2.659)	-4.765** (1.548)
Num of Obs.	6649	6649	6651	6648
CCM Exp.	23.3	24190.4	43.2	40.5
CCM Sec. 8	24.0	24195.9	47.6	43.3
<i>Panel B: Children Age 13-18 at Random Assignment</i>				
Exp. vs. Control	-1.272 (1.551)	1468.9 (1154.8)	1.126 (4.025)	-0.717 (2.278)
Sec. 8 vs. Control	-1.679 (1.257)	802.0 (946.1)	-4.746 (3.107)	-3.351+ (1.757)
Num of Obs.	9149	9149	9149	9148
CCM Exp.	22.3	25573.2	36.7	37.7
CCM Sec. 8	23.7	24737.6	40.8	39.5

Notes: This table replicates Table 6 in the text, but reports treatment-on-the-treated (TOT) estimates instead of ITT estimates in all columns. The TOT coefficients are estimated using a 2SLS specification (weighted to adjust for differences in sampling probabilities across sites and over time and including randomization site fixed effects), instrumenting for voucher takeup with the experimental and section 8 assignment indicators. Standard errors, reported in parentheses, are clustered by family (+ = $p < 0.10$, * = $p < 0.05$, ** = $p < 0.01$). CCM Exp. denotes the control complier mean corresponding to the experimental voucher group. CCM Exp. is constructed as the mean value of the dependent variable in the estimation sample among compliers (i.e., those who took up the voucher) in the experimental group minus the TOT estimate of the experimental effect. CCM Sec. 8. denotes the control complier mean corresponding to the Section 8 group, constructed analogously. See notes to Table 6 for further details on variable definitions and specifications.

APPENDIX TABLE 7a
Heterogeneity of Treatment Effects by Race: Intent-to-Treat Estimates

	Experimental vs. Control			Section 8 vs. Control		
	Hispanic (1)	Non-Black Non-Hisp. (2)	Black Non-Hisp. (3)	Hispanic (4)	Non-Black Non-Hisp. (5)	Black Non-Hisp. (6)
<i>Panel A: Children < Age 13 at Random Assignment</i>						
Individual Earnings 2008-12 (\$)	3306.2* (1492.3) [13735.9]	4019.8 (2979.4) [11687.1]	627.2 (704.6) [10069.3]	353.9 (1326.2) [13735.9]	4683.3 (3112.2) [11687.1]	1041.5 (796.5) [10069.3]
College Quality 18-20 (\$)	779.6 (542.0) [21356.4]	3191.8** (1099.8) [21009.8]	470.8+ (245.7) [20698.7]	697.0 (524.2) [21356.4]	5080.7** (1510.5) [21009.8]	109.5 (271.1) [20698.7]
Married 2008-12 (%)	3.234 (2.123) [5.9]	0.190 (4.153) [8.0]	1.655+ (0.922) [1.8]	3.900 (2.478) [5.9]	-1.562 (4.424) [8.0]	2.738* (1.108) [1.8]
ZIP Poverty Share 2008-12 (%)	-1.123 (0.921) [23.5]	0.127 (1.811) [17.0]	-1.846** (0.667) [24.2]	-0.700 (0.976) [23.5]	-2.279 (1.955) [17.0]	-1.526* (0.771) [24.2]
<i>Panel B: Children Age 13-18 at Random Assignment</i>						
Individual Earnings 2008-12 (\$)	-1326.9 (1811.9) [20501.1]	-1058.3 (3701.2) [16689.5]	-652.1 (931.3) [13369.9]	-1415.1 (1867.2) [20501.1]	3083.0 (4439.5) [16689.5]	-2162.0* (976.0) [13369.9]
College Quality 18-20 (\$)	-607.6 (801.1) [21694.8]	-3828.8* (1841.5) [24521.2]	-605.9 (419.9) [21168.1]	308.4 (931.2) [21694.8]	-290.7 (2410.6) [24521.2]	-1171.3** (387.1) [21168.1]
Married 2008-12 (%)	-3.391 (3.083) [16.6]	6.279 (6.505) [14.7]	0.452 (1.291) [5.2]	2.331 (3.333) [16.6]	-2.959 (5.708) [14.7]	-0.965 (1.360) [5.2]
ZIP Poverty Share 2008-12 (%)	0.262 (1.237) [21.7]	-1.161 (2.368) [20.2]	-0.420 (0.982) [24.4]	0.0336 (1.316) [21.7]	-6.092** (2.244) [20.2]	0.933 (1.105) [24.4]

Notes: This table replicates the intent-to-treat (ITT) OLS regression specifications in Column 2 of Table 3 (individual earnings), Column 6 of Table 4 (college quality), Column 1 of Table 5 (married) and Column 1 of Table 6 (poverty share), separately by racial group. Columns 1-3 report estimates on the indicator being assigned to the experimental group, while columns 4-6 report estimates on the indicator for being assigned to the Section 8 group. The estimates in Columns 1 and 4 are for Hispanic children and the two estimates in each row of these columns come from a single OLS regression analogous to that in Column 1 of Table 3. The estimates in Columns 2 and 5 for Non-black, Non-Hispanics and 3 and 6 for Black Non-Hispanics are constructed analogously. Standard errors, reported in parentheses, are clustered by family (* = $p < 0.10$, * = $p < 0.05$, ** = $p < 0.01$). Control group means for each estimation sample are reported in square brackets. See the notes to Tables 3-6 for further details on specifications and variable definitions.

APPENDIX TABLE 7b
Heterogeneity of Treatment Effects by Site: Intent-to-Treat Estimates

	Experimental vs. Control					Section 8 vs. Control				
	Baltimore (1)	Boston (2)	Chicago (3)	LA (4)	New York (5)	Baltimore (6)	Boston (7)	Chicago (8)	LA (9)	New York (10)
<i>Panel A: Children < Age 13 at Random Assignment</i>										
Individual Earnings 2008-12 (\$)	414.9 (1435.8) [10942.8]	2618.7 (1713.2) [12414.6]	681.2 (877.8) [8927.5]	2791.5 ⁺ (1554.9) [11139.6]	1652.4 (1612.4) [12516.9]	865.1 (1587.3) [10942.8]	3028.6 ⁺ (1824.3) [12414.6]	797.2 (1096.1) [8927.5]	964.7 (1413.7) [11139.6]	-353.5 (1428.2) [12516.9]
College Quality 18-20 (\$)	909.4* (457.6) [20163.5]	561.4 (607.6) [21707.4]	250.2 (406.1) [20546.0]	1090.5* (492.6) [20740.7]	569.8 (570.1) [21216.6]	413.7 (464.8) [20163.5]	2200.0** (777.4) [21707.4]	-258.0 (465.7) [20546.0]	342.3 (447.9) [20740.7]	476.9 (604.6) [21216.6]
Married 2008-12 (%)	2.204 (2.105) [2.0]	2.229 (2.008) [4.2]	1.004 (1.073) [1.2]	4.371 (2.653) [4.7]	0.0605 (1.828) [4.5]	1.844 (2.055) [2.0]	3.165 (2.379) [4.2]	4.812* (2.143) [1.2]	0.950 (2.494) [4.7]	3.189 (2.684) [4.5]
ZIP Poverty Share 2008-12 (%)	-1.738 (1.202) [22.3]	-1.139 (0.823) [18.6]	-1.440 (1.174) [24.3]	-3.517** (1.072) [26.1]	0.446 (1.399) [26.3]	-4.416** (1.354) [22.3]	-1.510 (0.920) [18.6]	-3.306* (1.526) [24.3]	0.343 (1.182) [26.1]	0.987 (1.470) [26.3]
<i>Panel B: Children Age 13-18 at Random Assignment</i>										
Individual Earnings 2008-12 (\$)	2720.4 (2235.1) [13440.0]	-3456.7 (2105.8) [19020.8]	-2336.1 (1467.8) [12861.2]	-508.3 (1629.8) [15958.1]	-583.2 (2051.0) [17237.7]	-1120.4 (1903.2) [13440.0]	-1410.0 (2339.6) [19020.8]	-4631.9** (1525.2) [12861.2]	936.9 (1699.8) [15958.1]	206.5 (2423.6) [17237.7]
College Quality 18-20 (\$)	512.0 (854.0) [20678.6]	-3106.0* (1287.4) [24366.3]	-611.4 (649.8) [20804.8]	-298.8 (649.8) [20991.2]	-855.4 (825.2) [21534.5]	291.1 (856.1) [20678.6]	-2708.5 ⁺ (1415.4) [24366.3]	-1221.3* (601.8) [20804.8]	707.7 (852.5) [20991.2]	-272.2 (926.5) [21534.5]
Married 2008-12 (%)	1.937 (2.795) [5.4]	-2.529 (3.641) [14.0]	1.557 (1.948) [3.6]	0.415 (3.575) [12.5]	-1.108 (2.866) [9.5]	-3.356 (2.186) [5.4]	-1.448 (3.898) [14.0]	-0.309 (2.109) [3.6]	0.772 (3.590) [12.5]	5.485 (3.374) [9.5]
ZIP Poverty Share 2008-12 (%)	-2.547 (1.785) [23.6]	-0.0498 (1.190) [17.5]	1.014 (1.891) [23.5]	-1.005 (1.393) [25.8]	0.494 (1.670) [24.6]	-1.942 (2.200) [23.6]	-1.109 (1.244) [17.5]	1.293 (2.145) [23.5]	-1.703 (1.587) [25.8]	1.414 (1.821) [24.6]

Notes: This table replicates Appendix Table 7a, dividing the sample by site instead of race. Standard errors, reported in parentheses, are clustered by family (* = p<0.10, * = p<0.05, ** = p<0.01). Control group means for each estimation sample are in square brackets. See notes to Appendix Table 7a for further details.

APPENDIX TABLE 8a
Linear Exposure Effect Estimates: Estimates with Controls

Dep. Var.:	Indiv. Earn. (\$)	Household Income (\$)		Coll. Qual.	Married	ZIP Poverty	Taxes Paid
	2008-2012 ITT	2008-2012 ITT	Age 26 ITT	18-20 ITT (\$)	ITT (%)	Share ITT (%)	ITT (\$)
	(1)	(2)	(3)	(4)	(5)	(6)	(7)
Experimental × Age at RA	-299.6 (190.8)	-652.3** (245.0)	-480.4+ (272.4)	-154.0** (53.44)	-0.536+ (0.284)	0.260+ (0.135)	-59.13* (23.18)
Section 8 × Age at RA	-241.1 (200.6)	-403.5 (255.8)	105.3 (291.7)	-113.4+ (61.03)	-0.549+ (0.305)	0.0634 (0.151)	-41.93+ (24.42)
Experimental	3968.9+ (2304.6)	8490.0** (2922.6)	6933.5+ (3618.9)	1713.4** (559.1)	7.724* (3.411)	-4.293* (1.726)	738.2** (269.8)
Section 8	2837.5 (2431.9)	5179.3+ (3029.2)	-693.3 (3756.1)	1366.5* (643.6)	8.358* (3.695)	-1.625 (1.968)	504.6+ (284.4)
Number of Observations	20043	20043	3956	20127	20043	15798	20043
Control Group Mean	13807.1	16259.9	14692.6	21085.1	6.6	23.7	627.8

Notes: This table replicates Table 8 in the text, including controls for the baseline covariates listed in Appendix Table 1a in every regression specification. Standard errors, reported in parentheses, are clustered by family (+ = p<0.10, * = p<0.05, ** = p<0.01). See notes to Table 8 for details on variable definitions and specifications.

APPENDIX TABLE 8b
Linear Exposure Effect Estimates: Treatment-on-Treated Estimates

Dep. Var.:	Indiv. Earn. (\$)	Household Income (\$)		Coll. Qual.	Married	ZIP Poverty	Taxes Paid
	2008-2012 TOT	2008-2012 TOT	Age 26 TOT	18-20 TOT (\$)	TOT (%)	Share TOT (%)	TOT (\$)
	(1)	(2)	(3)	(4)	(5)	(6)	(7)
Experimental × Age at RA	-839.2 ⁺ (492.0)	-1682.7 ^{**} (637.6)	-1292.7 ⁺ (684.6)	-361.6 ^{**} (122.5)	-1.281 ⁺ (0.721)	0.503 (0.316)	-155.5 ^{**} (59.44)
Section 8 × Age at RA	-393.8 (362.8)	-561.7 (466.3)	309.8 (512.0)	-175.0 ⁺ (103.6)	-0.635 (0.550)	-0.0456 (0.258)	-72.52 ⁺ (43.57)
Experimental	10834.5 ⁺ (5656.5)	21385.3 ^{**} (7250.1)	18095.4 [*] (8711.4)	4036.4 ^{**} (1202.7)	17.95 [*] (8.195)	-8.625 [*] (3.809)	1913.2 ^{**} (671.3)
Section 8	4626.4 (4178.7)	7219.2 (5253.6)	-2544.4 (6331.0)	2156.7 [*] (1025.2)	10.72 ⁺ (6.331)	-1.251 (3.193)	869.7 ⁺ (489.6)
Number of Observations	20043	20043	3956	20127	20043	15798	20043
Control Group Mean	13807.1	16259.9	14692.6	21085.1	6.6	23.7	627.8

Notes: This table replicates Table 8 in the text, but reports treatment-on-the-treated (TOT) estimates instead of ITT estimates in all columns. The TOT coefficients are estimated using a 2SLS specification (weighted to adjust for differences in sampling probabilities across sites and over time and including randomization site fixed effects). In this specification, we instrument for four variables -- takeup of each type of voucher and interactions of these two takeup indicators with age at random assignment -- with the experimental and section 8 assignment indicators and their interactions with age at random assignment. Standard errors, reported in parentheses, are clustered by family (+ = p<0.10, * = p<0.05, ** = p<0.01). See notes to Table 8 for further details on variable definitions and specifications.

APPENDIX TABLE 9a
Impacts of MTO on Adults' Income: Estimates with Controls

Dep. Var.:	Individual Earnings (\$)			Employed (%)	Hhold. Inc. (\$)
	2008-12 ITT	ITT w/Cntrls.	2012 ITT	ITT	ITT
	(1)	(2)	(3)	(4)	(5)
Exp. vs. Control	-168.7 (558.2)	-168.7 (558.2)	-468.9 (625.9)	-0.534 (1.524)	-136.2 (668.3)
Sec. 8 vs. Control	468.1 (609.0)	468.1 (609.0)	166.7 (709.3)	-0.0955 (1.668)	653.3 (756.1)
Num of Obs.	21075	21075	4215	21075	21075
Control Group Mean	14381.0	14381.0	13700.6	54.9	17951.5

Notes: This table replicates Table 9 in the text, including controls for the baseline covariates listed in Appendix Table 1a in every regression specification. Standard errors, reported in parentheses, are clustered by family (+ = $p < 0.10$, * = $p < 0.05$, ** = $p < 0.01$). Note that Columns 1 and 2 are identical to make the structure of this table match that of Table 9 in the text. See notes to Table 9 for details on variable definitions and specifications.

APPENDIX TABLE 9b
Impacts of MTO on Adults' Income: Treatment-on-Treated Estimates

Dep. Var.:	Individual Earnings (\$)			Employed (%)	Hhold. Inc. (\$)
	2008-12 TOT (1)	TOT w/Cntrls. (2)	2012 TOT (3)	TOT (4)	TOT (5)
Exp. vs. Control	-734.4 (1290.3)	-351.2 (1159.6)	-1414.0 (1400.5)	-1.961 (3.538)	-702.1 (1535.8)
Sec. 8 vs. Control	396.7 (1069.1)	741.2 (965.2)	-155.9 (1200.5)	-1.110 (2.904)	820.4 (1314.1)
Num of Obs.	21075	21075	4215	21075	21075
CCM Exp.	15582.8	15199.7	15246.2	59.8	18766.7
CCM Sec. 8	14521.8	14177.3	13940.5	57.4	17134.6

Notes: This table replicates Table 9 in the text, but reports treatment-on-the-treated (TOT) estimates instead of ITT estimates in all columns. The TOT coefficients are estimated using a 2SLS specification (weighted to adjust for differences in sampling probabilities across sites and over time and including randomization site fixed effects), instrumenting for voucher takeup with the experimental and section 8 assignment indicators. Standard errors, reported in parentheses, are clustered by family (* = p<0.10, * = p<0.05, ** = p<0.01). CCM Exp. denotes the control complier mean corresponding to the experimental voucher group. CCM Exp. is constructed as the mean value of the dependent variable in the estimation sample among compliers (i.e., those who took up the voucher) in the experimental group minus the TOT estimate of the experimental effect. CCM Sec. 8. denotes the control complier mean corresponding to the Section 8 group, constructed analogously. See notes to Table 9 for further details on variable definitions and specifications.

APPENDIX TABLE 10a
Impacts of MTO on Federal Income Tax Payments: Estimates with Controls

Dep. Var.: Filing a Tax Return (%)	Total Income Taxes Paid (\$)		
	2008-12 ITT (1)	2008-12 ITT (2)	2008-12 TOT (3)
<i>Panel A: Children < Age 13 at Random Assignment</i>			
Exp. vs. Control	5.073** (1.924)	156.6* (61.45)	337.2* (131.8)
Sec. 8 vs. Control	4.078* (2.014)	96.40+ (54.04)	151.3+ (84.53)
Num of Obs.	8420	8420	8420
Control Group Mean	59.3	447.5	447.5
<i>Panel B: Children Age 13-18 at Random Assignment</i>			
Exp. vs. Control	-1.643 (1.880)	-175.0+ (93.11)	-442.1+ (236.5)
Sec. 8 vs. Control	-1.935 (2.091)	-132.2 (91.51)	-233.2 (162.9)
Num of Obs.	11623	11623	11623
Control Group Mean	65.6	775.2	775.2

Notes: This table replicates Table 12 in the text, including controls for the baseline covariates listed in Appendix Table 1a in every regression specification. Standard errors, reported in parentheses, are clustered by family (+ = p<0.10, * = p<0.05, ** = p<0.01). See notes to Table 12 for details on variable definitions and specifications.

APPENDIX TABLE 10b
Impacts of MTO on Federal Income Tax Payments: Treatment-on-Treated Estimates

Dep. Var.: Filing a Tax Return (%)	Total Income Taxes Paid (\$)		
	2008-12 TOT	2008-12 TOT	
(1)	(2)	(3)	
<i>Panel A: Children < Age 13 at Random Assignment</i>			
Exp. vs. Control	12.31** (4.444)	393.6** (134.1)	393.6** (134.1)
Sec. 8 vs. Control	7.448* (3.471)	169.1* (85.48)	169.1* (85.48)
Num of Obs.	8420	8420	8420
CCM Exp.	51.1	300.6	300.6
CCM Sec. 8	57.5	365.5	365.5
<i>Panel B: Children Age 13-18 at Random Assignment</i>			
Exp. vs. Control	-5.220 (5.171)	-441.6+ (230.8)	-441.6+ (230.8)
Sec. 8 vs. Control	-4.070 (4.083)	-230.1 (173.2)	-230.1 (173.2)
Num of Obs.	11623	11623	11623
CCM Exp.	69.9	1099.3	1099.3
CCM Sec. 8	69.3	900.1	900.1

Notes: This table replicates Table 12 in the text, but reports treatment-on-the-treated (TOT) estimates instead of ITT estimates in all columns. The TOT coefficients are estimated using a 2SLS specification (weighted to adjust for differences in sampling probabilities across sites and over time and including randomization site fixed effects), instrumenting for voucher takeup with the experimental and section 8 assignment indicators. Standard errors, reported in parentheses, are clustered by family (+ = $p < 0.10$, * = $p < 0.05$, ** = $p < 0.01$). CCM Exp. denotes the control complier mean corresponding to the experimental voucher group. CCM Exp. is constructed as the mean value of the dependent variable in the estimation sample among compliers (i.e., those who took up the voucher) in the experimental group minus the TOT estimate of the experimental effect. CCM Sec. 8. denotes the control complier mean corresponding to the Section 8 group, constructed analogously. Note that Columns 2 and 3 are identical to make the structure of this table match that of Table 12 in the text. See notes to Table 12 for further details on variable definitions and specifications.

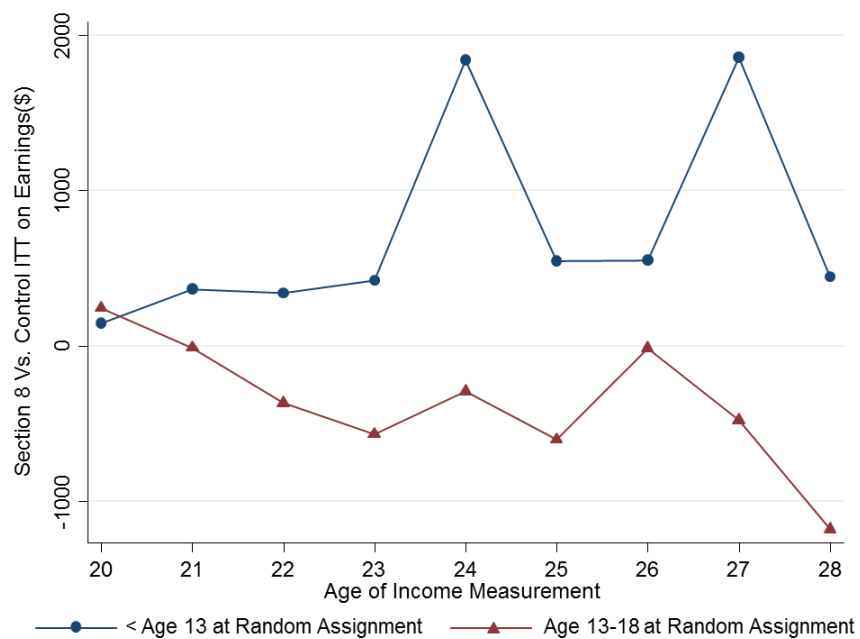
APPENDIX TABLE 11
Robustness Checks: Varying Age Cutoffs and Pooling Section 8 and Experimental Groups

	< Age 12 at RA		< Age 13 at RA		< Age 14 at RA		Pooled Sec. 8 & Exp	
	Exp. vs. Control	Sec. 8 vs. Control	Exp. vs. Control	Sec. 8 vs. Control	Exp. vs. Control	Sec. 8 vs. Control	Baseline ITT	ITT with Controls
	(1)	(2)	(3)	(4)	(5)	(6)	(7)	(8)
Individual Earnings (\$)	1416.3 ⁺ (723.7)	1414.8 ⁺ (764.8)	1624.0 [*] (662.4)	1109.3 (676.1)	1034.4 ⁺ (623.8)	216.2 (624.2)	1393.5 [*] (569.8)	1124.1 [*] (553.6)
College Quality 18-20 (\$)	697.1 ^{**} (244.0)	587.9 [*] (274.3)	686.7 ^{**} (231.2)	632.7 [*] (256.3)	555.5 [*] (220.5)	524.5 [*] (246.7)	662.8 ^{**} (201.0)	537.1 ^{**} (192.6)
Married (%)	2.217 [*] (0.911)	2.686 [*] (1.087)	1.934 [*] (0.892)	2.840 ^{**} (1.055)	1.804 ⁺ (0.936)	2.526 [*] (1.043)	2.340 ^{**} (0.792)	1.999 [*] (0.793)
Poverty Share (%)	-1.481 [*] (0.650)	-1.029 (0.764)	-1.592 ^{**} (0.602)	-1.394 [*] (0.699)	-1.624 ^{**} (0.569)	-1.129 ⁺ (0.661)	-1.503 ^{**} (0.552)	-1.605 ^{**} (0.535)
Income Taxes Paid (\$)	159.4 [*] (73.98)	120.2 ⁺ (66.27)	183.9 ^{**} (62.80)	109.0 [*] (54.76)	151.7 ^{**} (56.05)	75.14 (48.95)	150.3 ^{**} (48.32)	129.6 ^{**} (48.34)

Notes: Columns 1-6 of this table replicate the intent-to-treat (ITT) OLS regression specifications in Column 2 of Table 3 (individual earnings), Column 6 of Table 4 (college quality), Column 1 of Table 5 (married), Column 1 of Table 6 (poverty share), and Column 2 of Table 12 (income taxes paid) varying the age restriction used to define "young" children. The first two columns include children below age 12 at random assignment (RA), Columns 3 and 4 include children below age 13 at RA (the specification used in the main text), and Columns 5 and 6 include children below age 14 at RA. Columns 1, 3, and 5 report ITT estimates on the indicator for being assigned to the experimental group, while Columns 2, 4, and 6 report estimates on the indicator for being assigned to the Section 8 group. Column 7 replicates the same regression specifications as in Columns 3 and 4 (using children below age 13 at RA), but pools the Section 8 and Experimental treatment groups by using a single indicator for being assigned to either of the two groups as the independent variable in each regression. Column 8 replicates Column 7 including controls for the baseline covariates listed in Appendix Table 1a. Standard errors, reported in parentheses, are clustered by family (+ = p<0.10, * = p<0.05, ** = p<0.01). See the notes to Tables 3-6 and 12 for further details on specifications and variable definitions.

APPENDIX FIGURE 1

Impacts of Section 8 Voucher by Age of Earnings Measurement

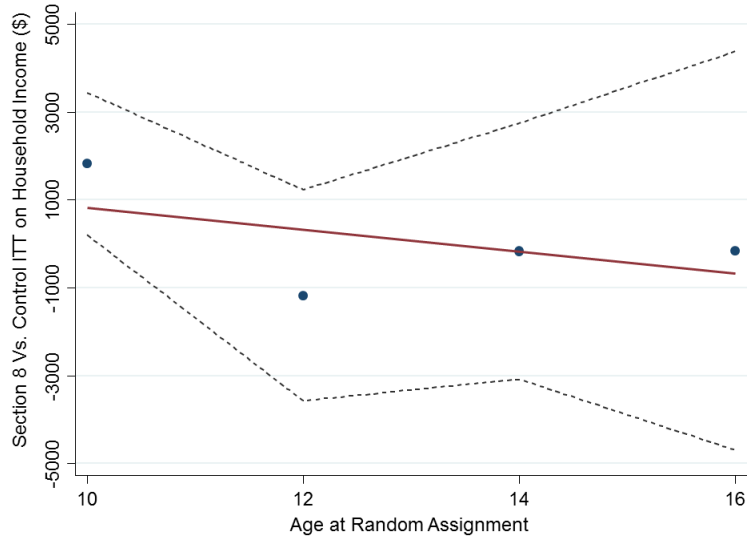


Notes: This figure replicates Figure 1 in the text, but plots the effects of being assigned to the Section 8 voucher group (relative to the control group). See notes to Figure 1 for details on variable definitions and specifications.

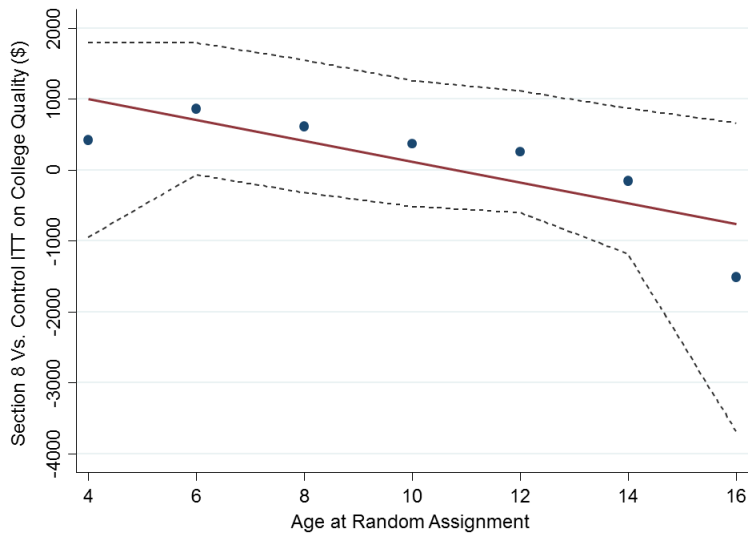
APPENDIX FIGURE 2

Impacts of Section 8 Voucher by Age at Random Assignment

A. Household Income, Age ≥ 24 (\$)



B. College Quality, Ages 18-20 (\$)

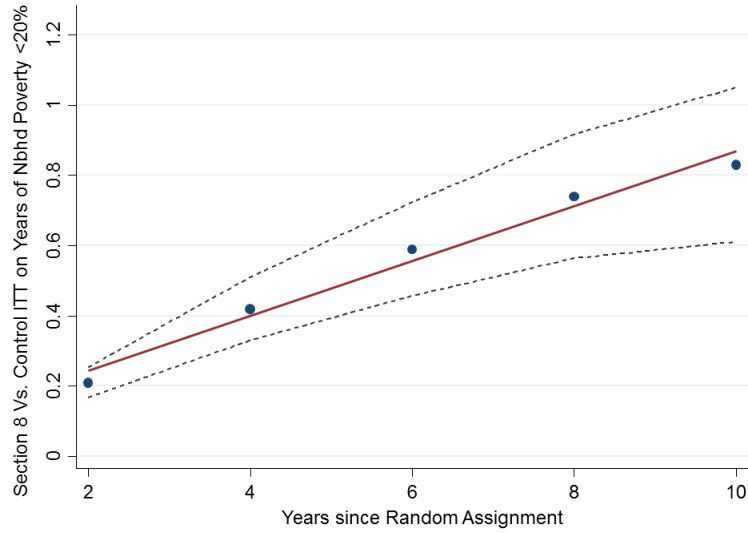


Notes: These figures replicate Figure 2 in the text, but plot the effects of being assigned to the Section 8 voucher group (relative to the control group). See notes to Figure 2 for details on variable definitions and specifications.

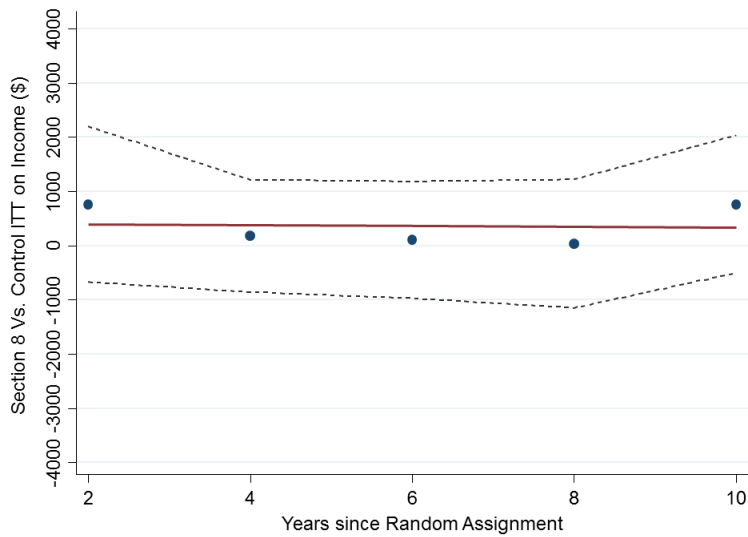
APPENDIX FIGURE 3

Impacts of Section 8 Voucher on Adults by Years Since Random Assignment

A. Cumulative Years of Exposure to Low-Poverty Neighborhoods



B. Individual Earnings (\$)



Notes: These figures replicate Figure 3 in the text, but plot the effects of being assigned to the Section 8 voucher group (relative to the control group). See notes to Figure 3 for details on variable definitions and specifications.