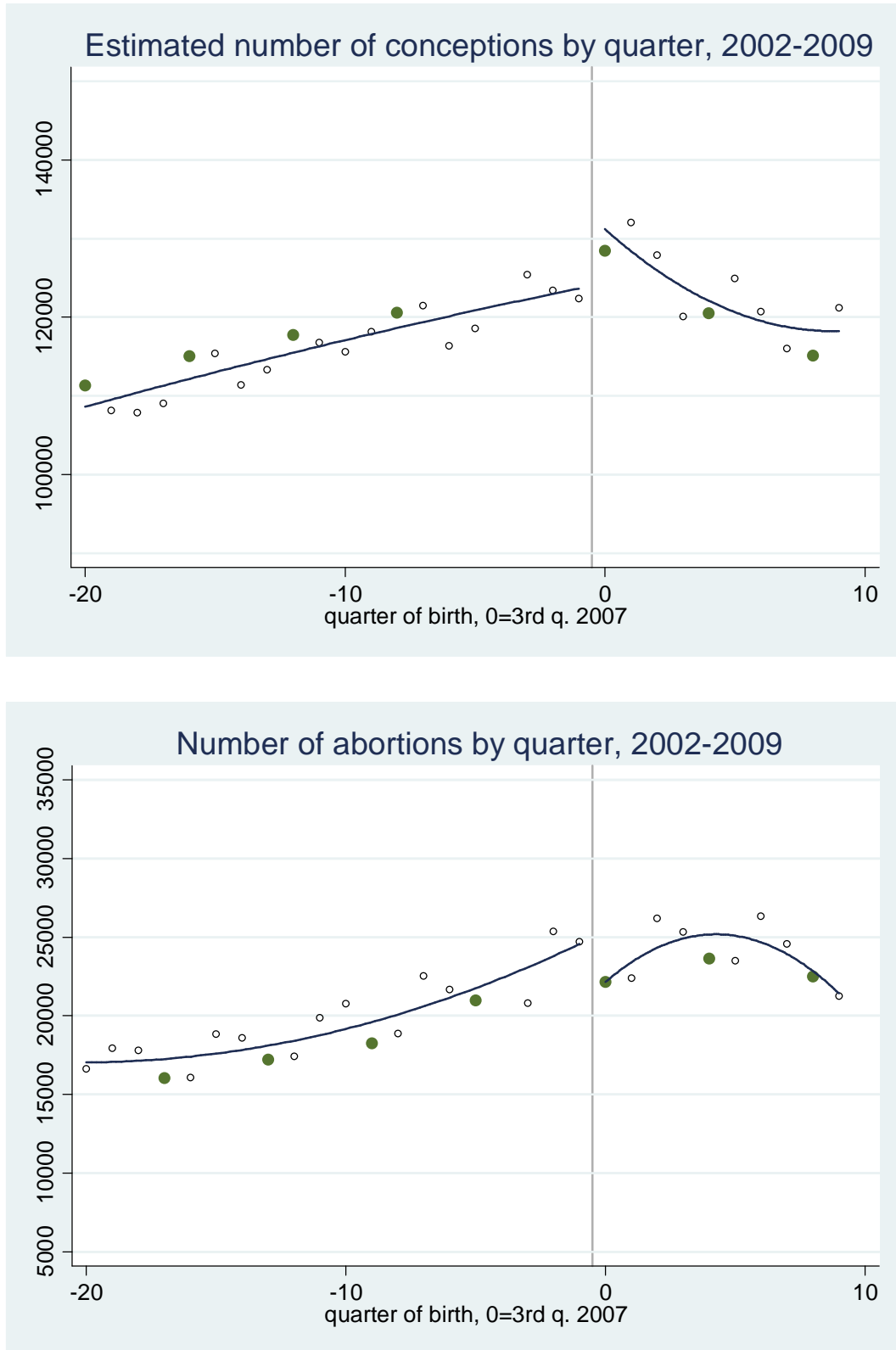


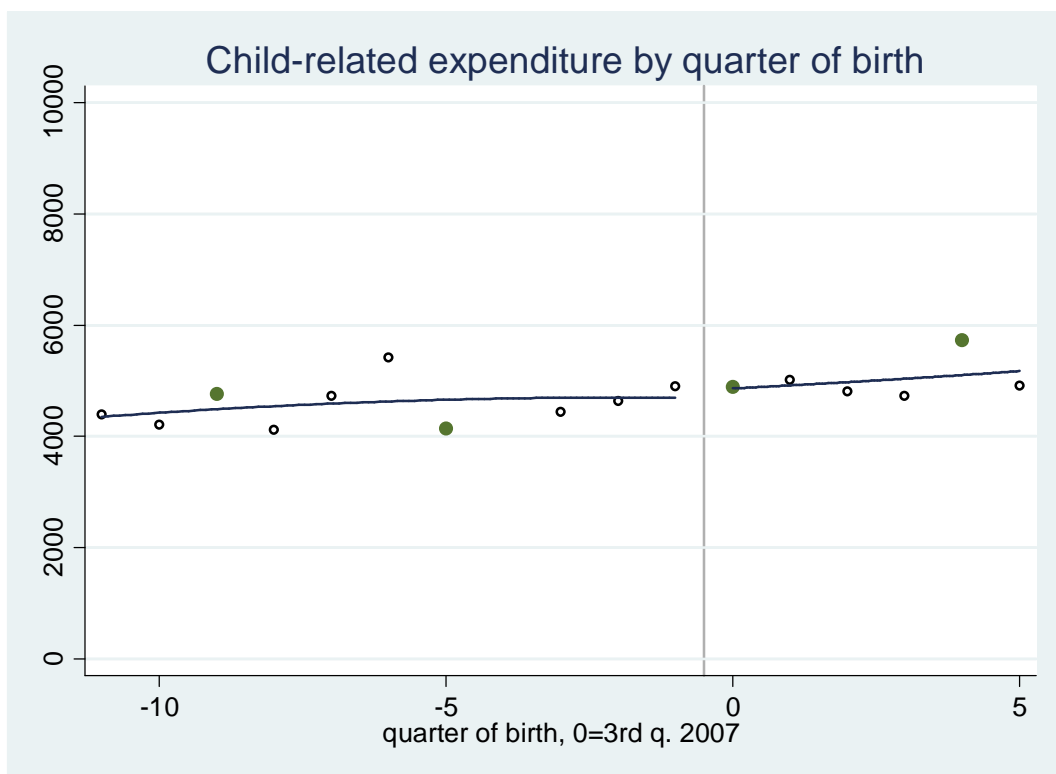
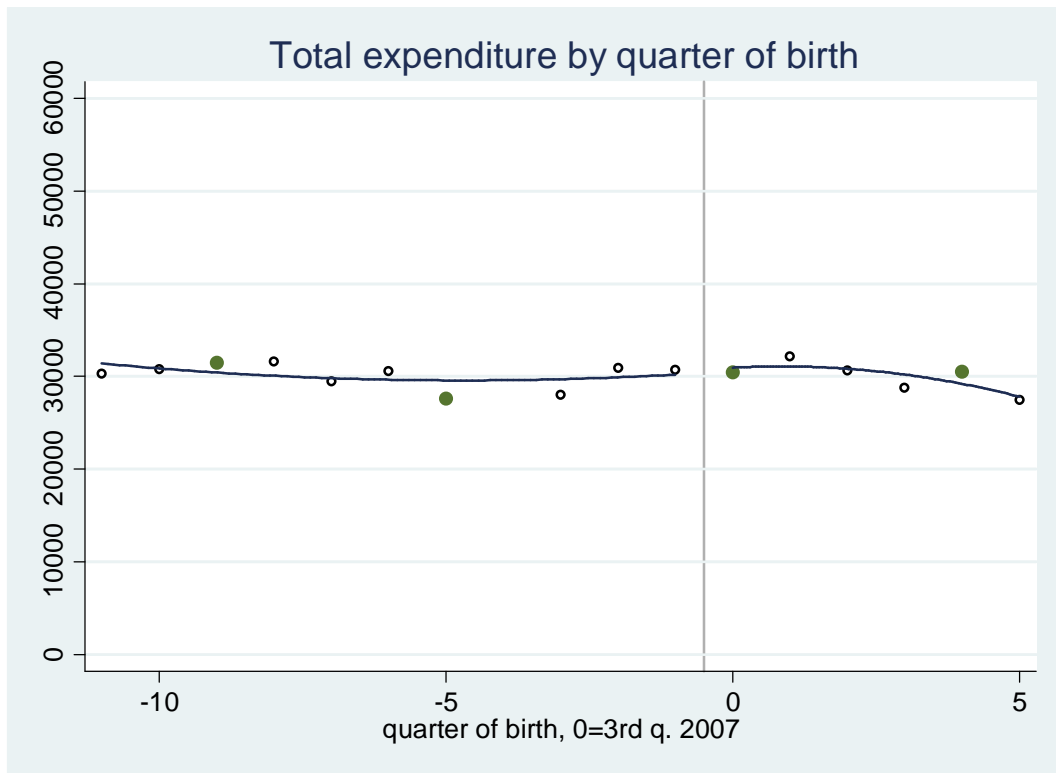
Online appendix to “The Effects of a Universal Child Benefit...” by Libertad González

Figure 1. Conceptions and abortions by quarter



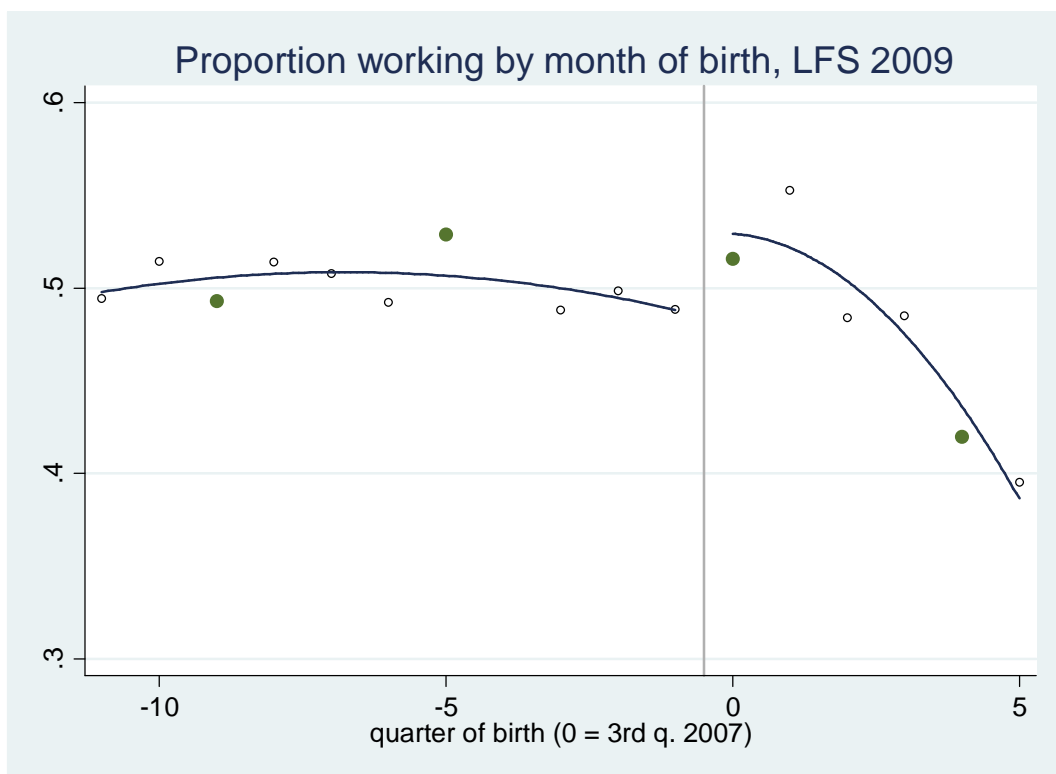
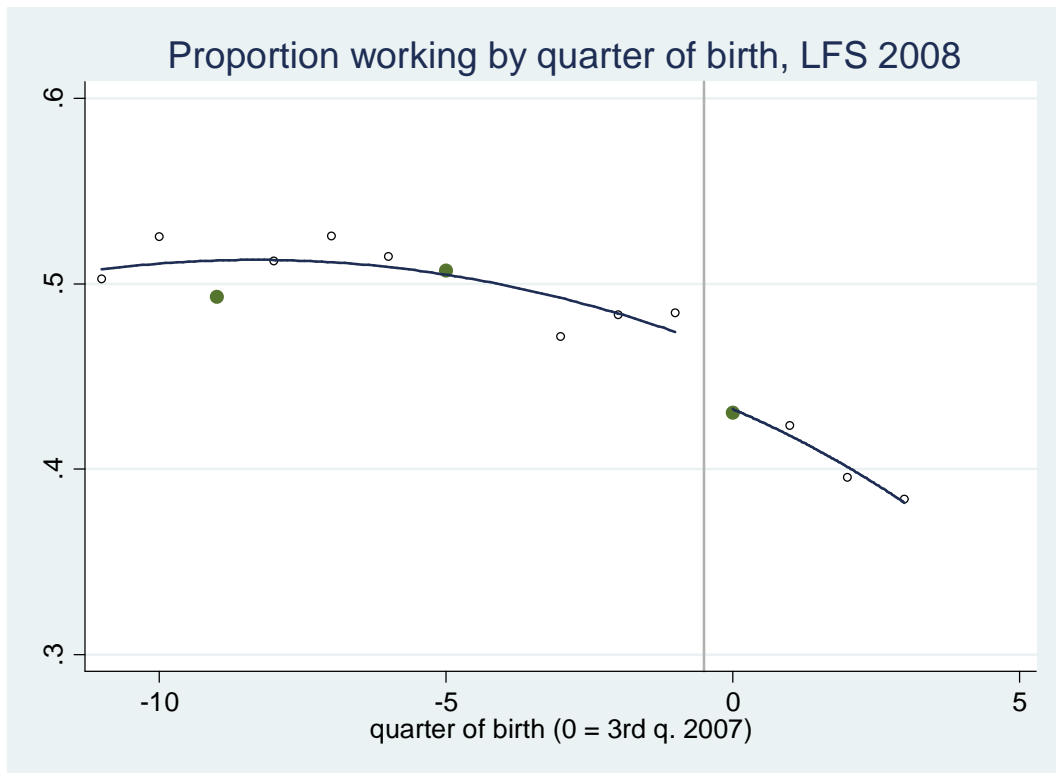
Second-order polynomial fits shown.

Figure 2. Expenditures by quarter of birth



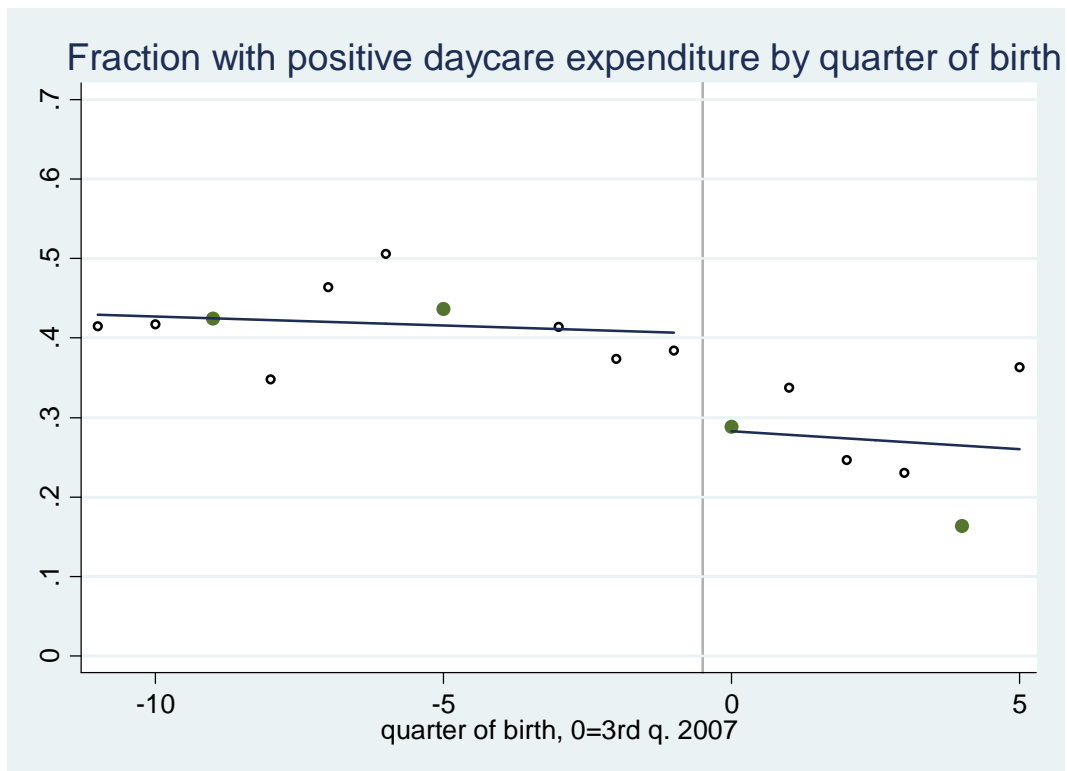
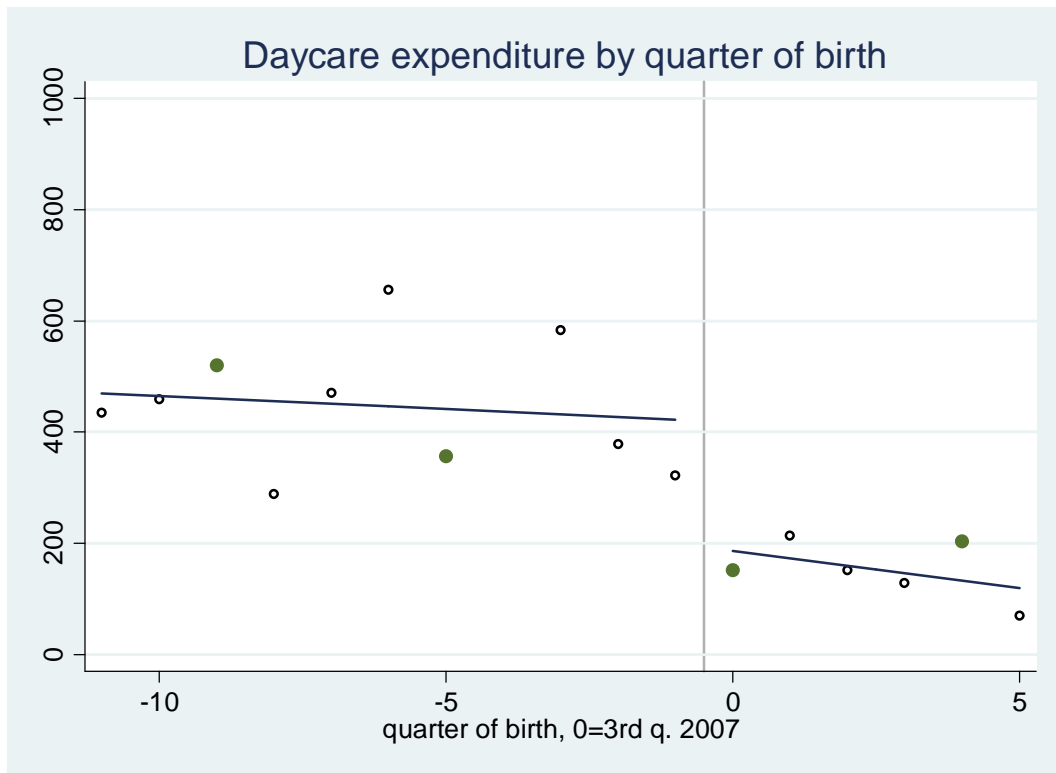
Second-order polynomial fits shown.

Figure 3. Labor supply by quarter of birth



Second-order polynomial fits shown.

Figure 4. Daycare expenditures by quarter of birth (HBS 2008)



Second-order polynomial fits shown.

Table 1. Fertility results (by quarter)

	RDD 10 years		RDD 5 years		RDD 12-12m		RDD 9-9m		RDD 3-3m		DiD 10 years		DiD 8 years		DiD 5 years	
	1		2		3		4		5		6		7		8	
Conceptions	0,0459	**	0,0534	**	0,0902	**	0,069	**	0,0503		0,0272		0,0409	**	0,0453	*
	(0,0208)		(0,0256)		(0,0375)		(0,0316)		(0,0314)		(0,0208)		(0,0185)		(0,0239)	
Abortions	-0,1304	***	-0,1392	***	-0,1534	**	-0,1907	**	-0,1085	*	-0,0939	***	-0,0801	***	-0,0591	**
	(0,0392)		(0,0498)		(0,0718)		(0,0712)		(0,0412)		(0,0229)		(0,0220)		(0,0257)	
Years included	2000-2009		2005-2009		2006-2008		2006-2008		2007		2000-2009		2002-2009		2005-2009	
N (number of months)	120		60		24		18		6		120		96		60	
Linear trend in q	Y		Y		Y		Y		N		Y		Y		Y	
Quadratic trend in q	Y		Y		Y		N		N		Y		Y		Y	
Cubic term in q	Y		N		N		N		N		Y		N		N	
N. days of the month	Y		Y		Y		Y		Y		Y		Y		Y	
Quarter dummies	N		N		N		N		N		Y		Y		Y	

Note: This table parallels Table 2 in the paper.

Table 2. Expenditure results (by quarter)

	1	2	3	4	5	6	7	8
Dependent variables	RDD 9m	RDD 6m	RDD 4m	RDD 3m	RDD 2m	RDD 2m	DiD 1	DiD 2
Total exp.	4286	-229	2753	-580	-1774	-1084	1178	-373
	5677	2947	3838	1553	2032	1832	2236	(1378)
Total exp. (logs)	0.025	-0.073	0.007	-0.041	-0.072	-0.060	0.036	-0.037
	0.171	0.091	0.108	0.052	0.067	0.063	0.07	(0,041)
Child-related exp.	151	-176	535	-21	-150	10	542	-188
	1456	790	1005	444	536	534	583	(330)
Child-related exp. (logs)	.196	.022	.092	.018	.002	-0.001	.120	-0.056
	.336	.190	.211	.103	.127	.128	.130	(0,069)
Durable goods exp.	257	-1176	-172	-760	-1046	-999	-557	-351
	3009	1677	1980	927	1145	1099	1126	(713)
Durable goods exp. (logs)	.993*	.295	.451	.089	.080	.071	.122	-0.044
	.534	.299	.335	.170	.200	.213	.209	(0,110)
N	941	640	441	315	230	230	2249	2561
Linear trend in q	Y	Y	Y	N	N	N	Y	Y
Quadratic trend in q	Y	N	N	N	N	N	Y	N
Quarter of birth dummies	N	N	N	N	N	N	Y	Y
Controls	Y	Y	Y	Y	N	Y	Y	Y
N. of months	18	12	8	6	4	4	48	48

Note: This table parallels table 4 in the paper.

Table 3. Maternal labor supply results (by quarter)

	1	2	3	4	5	6	7	8
Dependent variable	RDD 9m	RDD 6m	RDD 4m	RDD 3m	RDD 2m	RDD 2m	DiD 1 (obs. in 2008, diff. ages)	DiD 2 (obs. diff years, same age)
Working last week	-0.0342 (0.0557)	-0.0484 (0.0304)	-0.0742** (0.0348)	-0.0532*** (0.0179)	-0.0547** (0.0219)	-0.0576*** (0.0213)	-0.0422** (0.0166)	-0.0291** (0.0120)
Employed	-0.0576 (0.0543)	-0.0542* (0.0295)	-0.0973*** (0.0340)	-0.0535*** (0.0174)	-0.0612*** (0.0219)	-0.0610*** (0.0208)	-0.0234 (0.0171)	-0.0280** (0.0119)
N	8691	5813	4083	3026	2062	2062	21185	25544
Linear trend in q	Y	Y	Y	N	N	N	Y	Y
Quadratic trend in q	Y	N	N	N	N	N	Y	N
Quarter of birth dummies	N	N	N	N	N	N	Y	Y
Controls	Y	Y	Y	Y	N	Y	Y	Y
N. of months of birth	18	12	8	6	4	4	48	48

Note: This table parallels table 5 in the paper.

Table 4. Child care expenditures (by quarter)

	1	2	3	4	5	6	7	8
Dependent variables	RDD 9m	RDD 6m	RDD 4m	RDD 3m	RDD 2m	RDD 2m	DiD 1	DiD 2
Private daycare	-230 (293)	-101 (151)	-138 (181)	-157* (80)	-147 (101)	-158 (103)	-175* (84)	-66 66
Private daycare (binary)	-0.1062 (0.1727)	-0.0836 (0.0948)	-0.0377 (0.1111)	-0.0943* (0.0538)	-0.1096* (0.0624)	-0.1248* (0.0644)	-0.0286 (0.0518)	-0.0538 (0.0365)
N	958	651	446	319	234	234	2289	2904
Linear trend in q	Y	Y	Y	N	N	N	Y	Y
Quadratic trend in q	Y	N	N	N	N	N	Y	N
Quarter of birth dummies	N	N	N	N	N	N	Y	Y
Controls	Y	Y	Y	Y	N	Y	Y	Y
N. of months	18	12	8	6	4	4	48	48

Note: This table parallels table 6 in the paper.